



SEMI & SINGLE DETACHED HOMES | FLOORPLANS



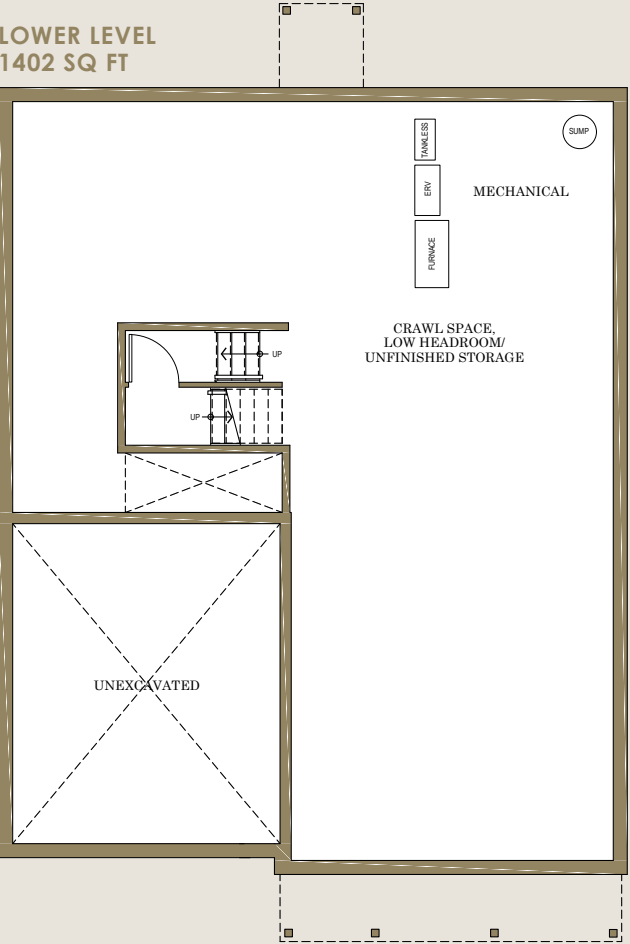
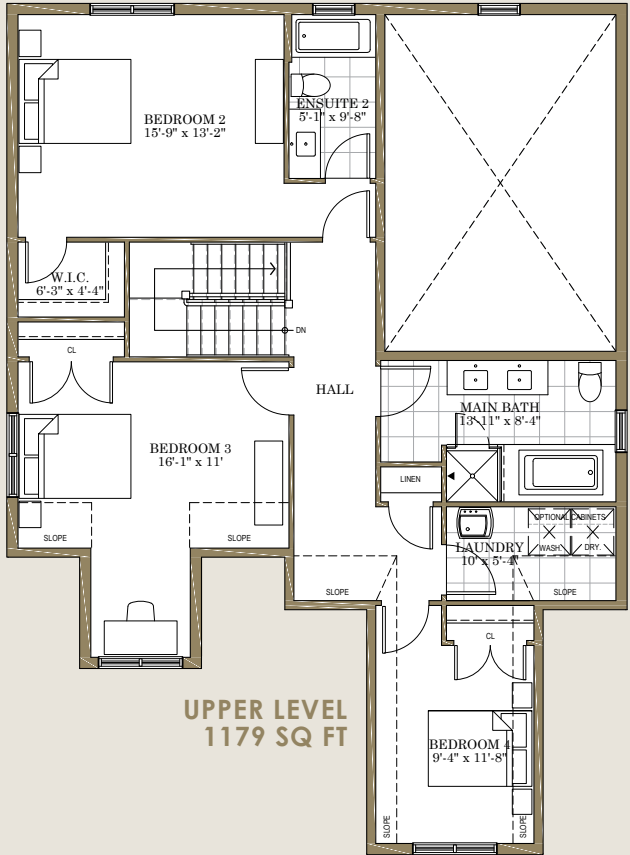
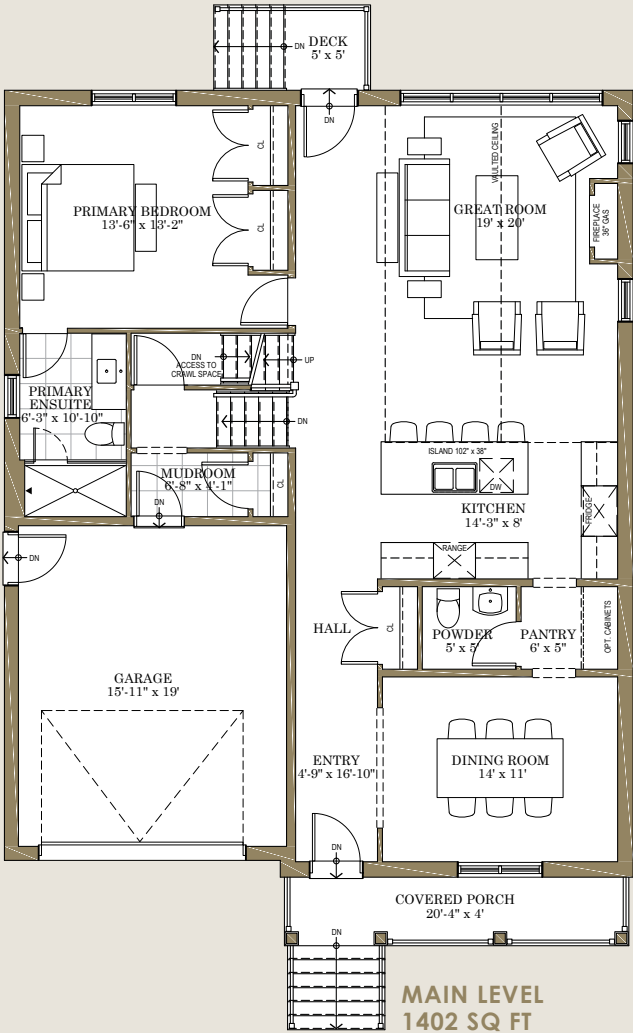
THE BROOKE | LOT 1  
2581<sup>SQ.</sup>  
FT.

Discover the balance between grand design and welcoming comfort. A main floor primary bedroom features an ensuite with timeless fixtures and a frameless glass shower. Three second-floor bedrooms with upstairs laundry is endlessly convenient. But it is the sophisticated design that truly elevates The Brooke.

Soaring vaulted ceilings in the great room create an awe-inspiring architectural effect. A formal dining room cultivates a sense of sophistication. And of course, the timeless distinction of heritage-inspired brick exteriors accented with James Hardie siding.



LOT 1  
DETACHED



Actual usable floor space may vary from stated floor area.  
Floor plan & specifications subject to change without notice. E.&O.E.

THE **MAPLE** | LOT 2  
LEFT & RIGHT 2166<sup>sq</sup><sub>ft.</sub>

Contemporary style meets historic flair. The exterior of The Maple features a boldly dramatic combination of heritage-inspired red brick with sharp black James Hardie siding to create a stunning streetscape.

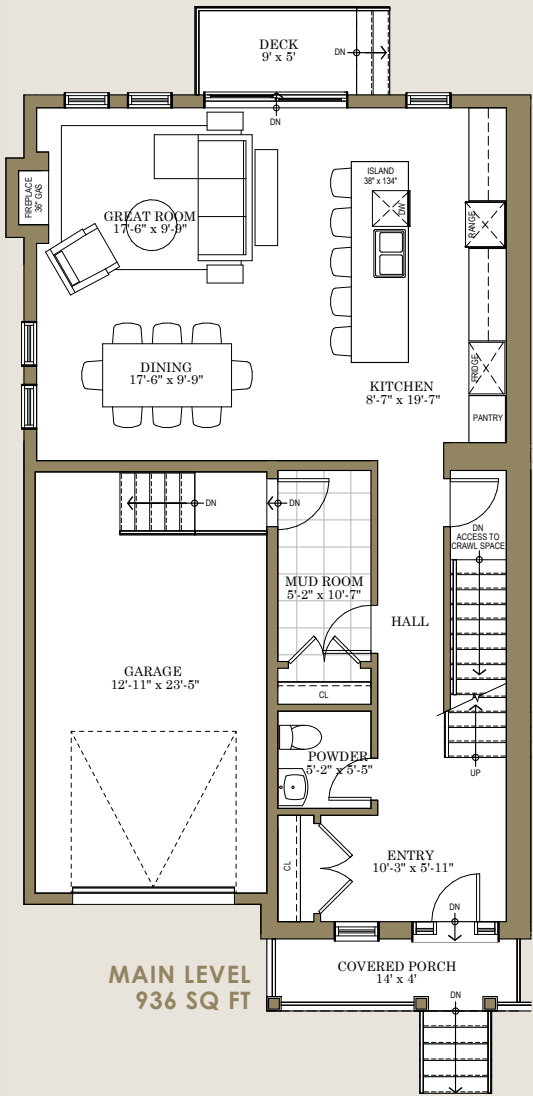
Inside, a sweeping open concept main floor features 9’6” ceilings and a stylish kitchen with an oversized 11’ island and built-in pantry. Three spacious bedrooms and a den with 9’ ceilings throughout the upper floor makes your home versatile and bright. And of course, the primary suite offers dual walk-in closets and a luxurious 4-piece ensuite.

LOT 2 LEFT  
SEMI DETACHED

LOT 2 RIGHT  
SEMI DETACHED



LOT 2 LEFT

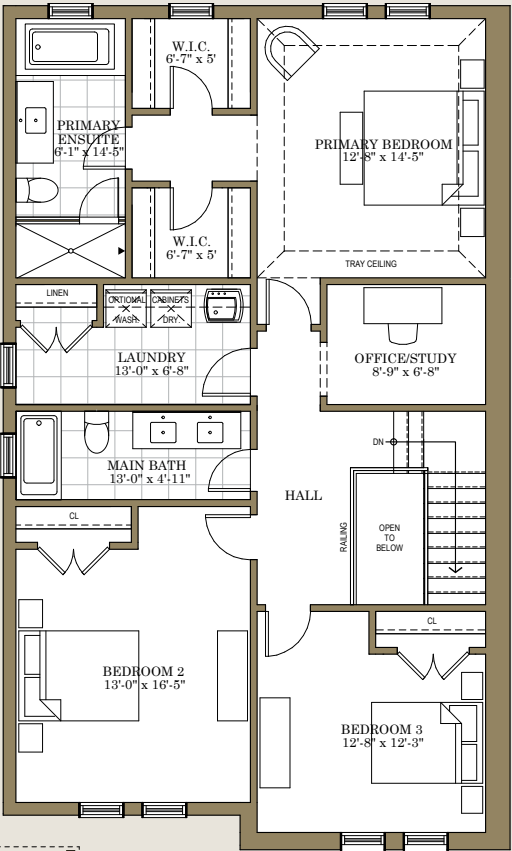


MAIN LEVEL  
936 SQ FT

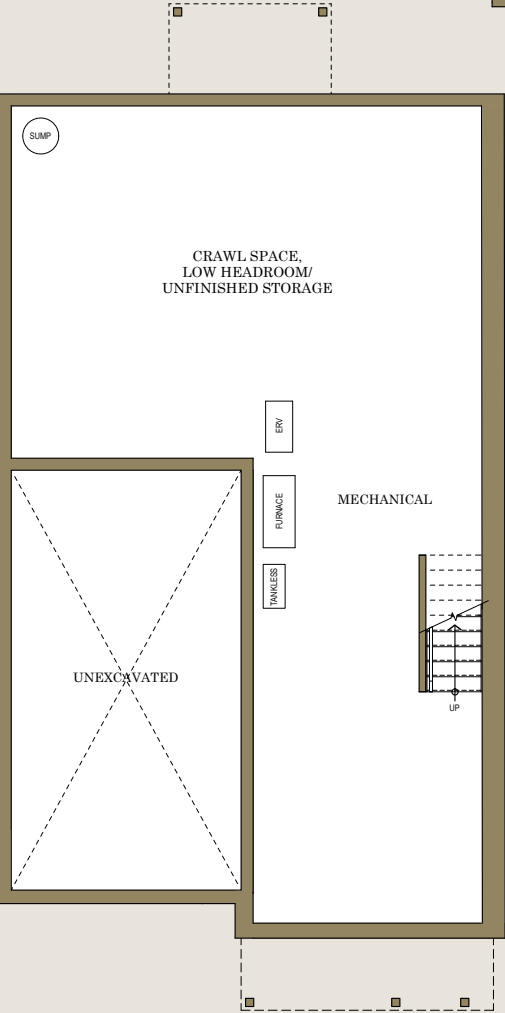
Lot 2 Right is the mirrored version of these floorplans.

Actual usable floor space may vary from stated floor area. Floor plan & specifications subject to change without notice. E.&O.E.

UPPER LEVEL  
1230 SQ FT



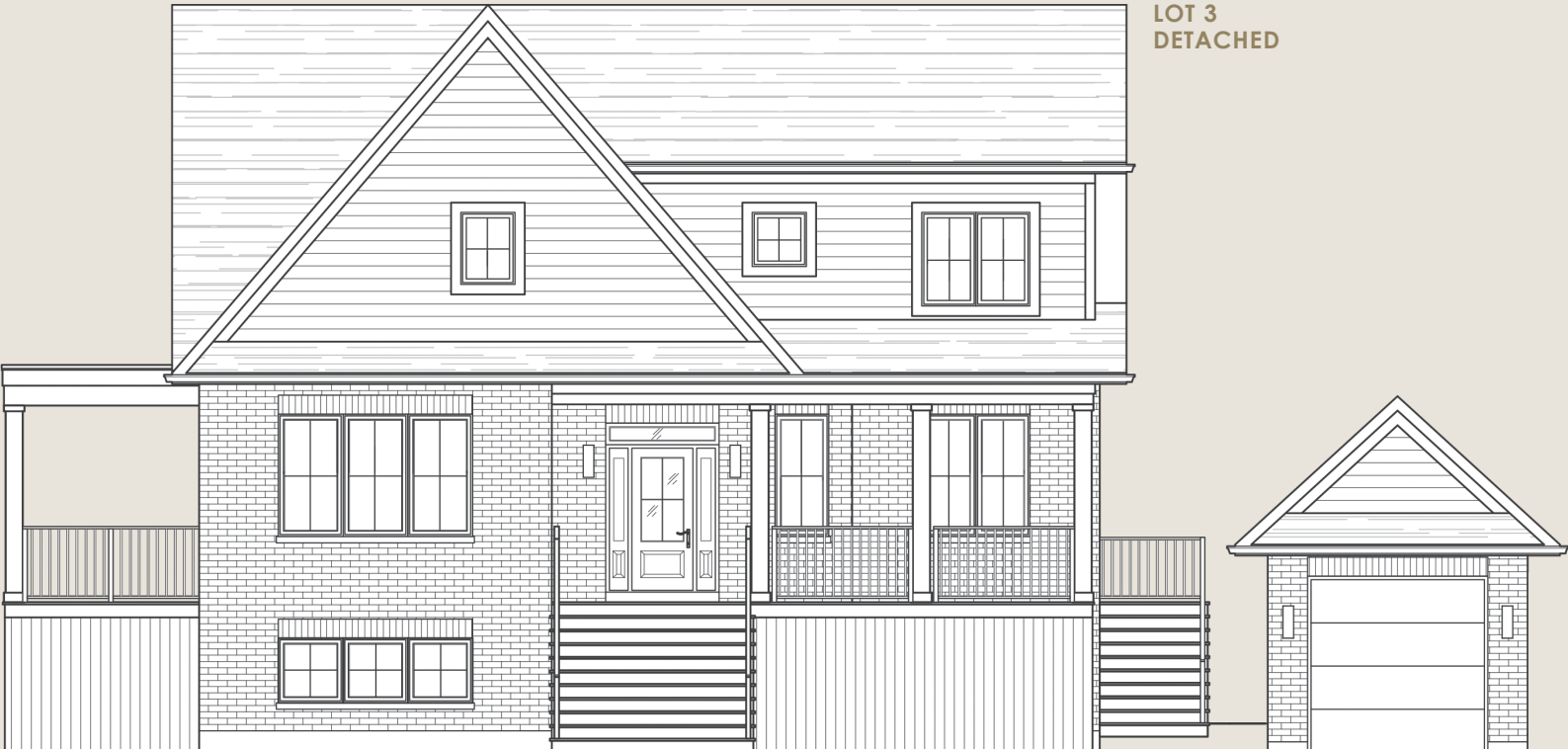
LOWER LEVEL  
936 SQ FT



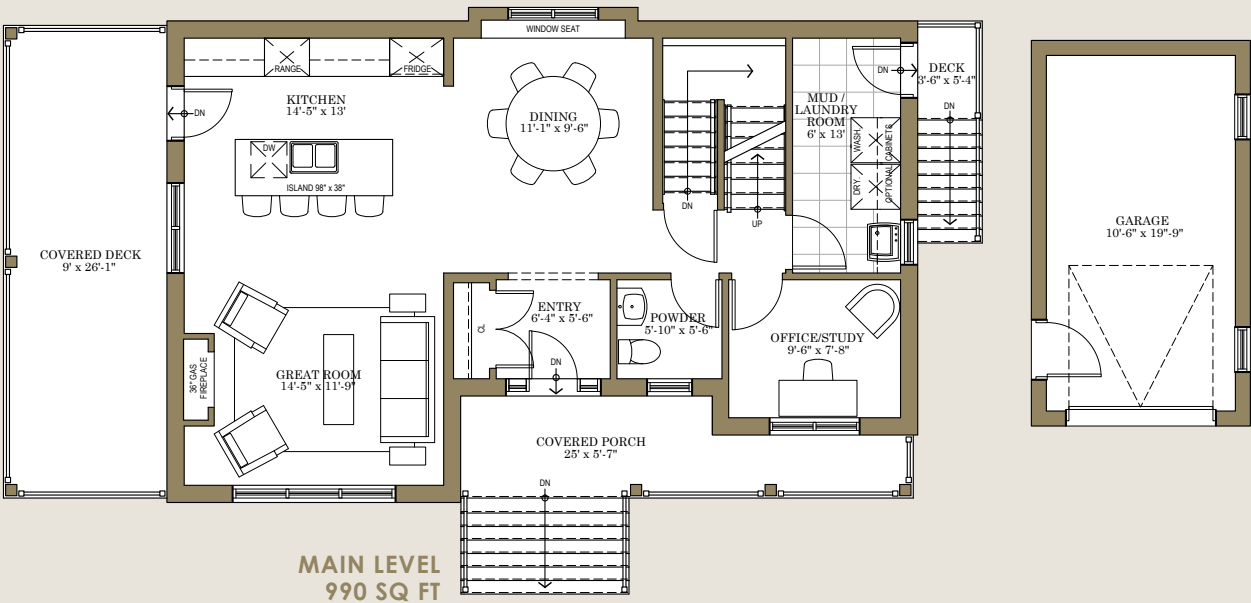
THE NEWPORT | LOT 3  
1792<sup>SQ.</sup>  
FT.

This is the centre of it all. The corner of Fifth and Maple, Collingwood’s most desirable streets, is home to The Newport. An oversized covered porch lines the entire side of the home, offering classic appeal and plenty of outdoor space.

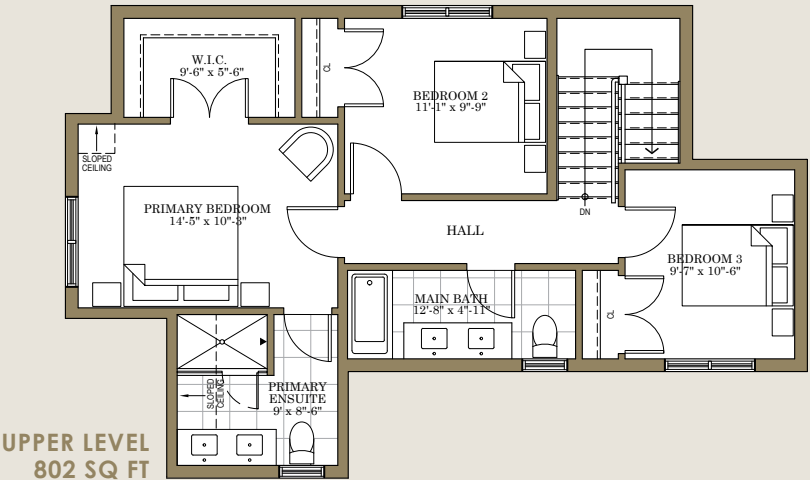
Your open concept main floor features a luxurious kitchen that leads out onto the porch for convenient outdoor dining, and a main floor study provides the perfect place to work in peace. Upstairs, three spacious bedrooms includes a sophisticated primary bedroom with a walk-in closet and gleaming ensuite bathroom.



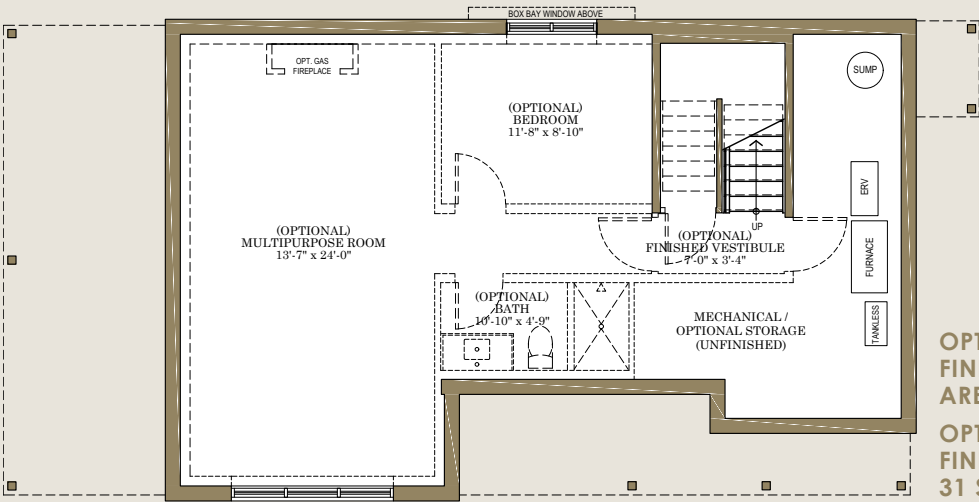
LOT 3  
DETACHED



MAIN LEVEL  
990 SQ FT



UPPER LEVEL  
802 SQ FT



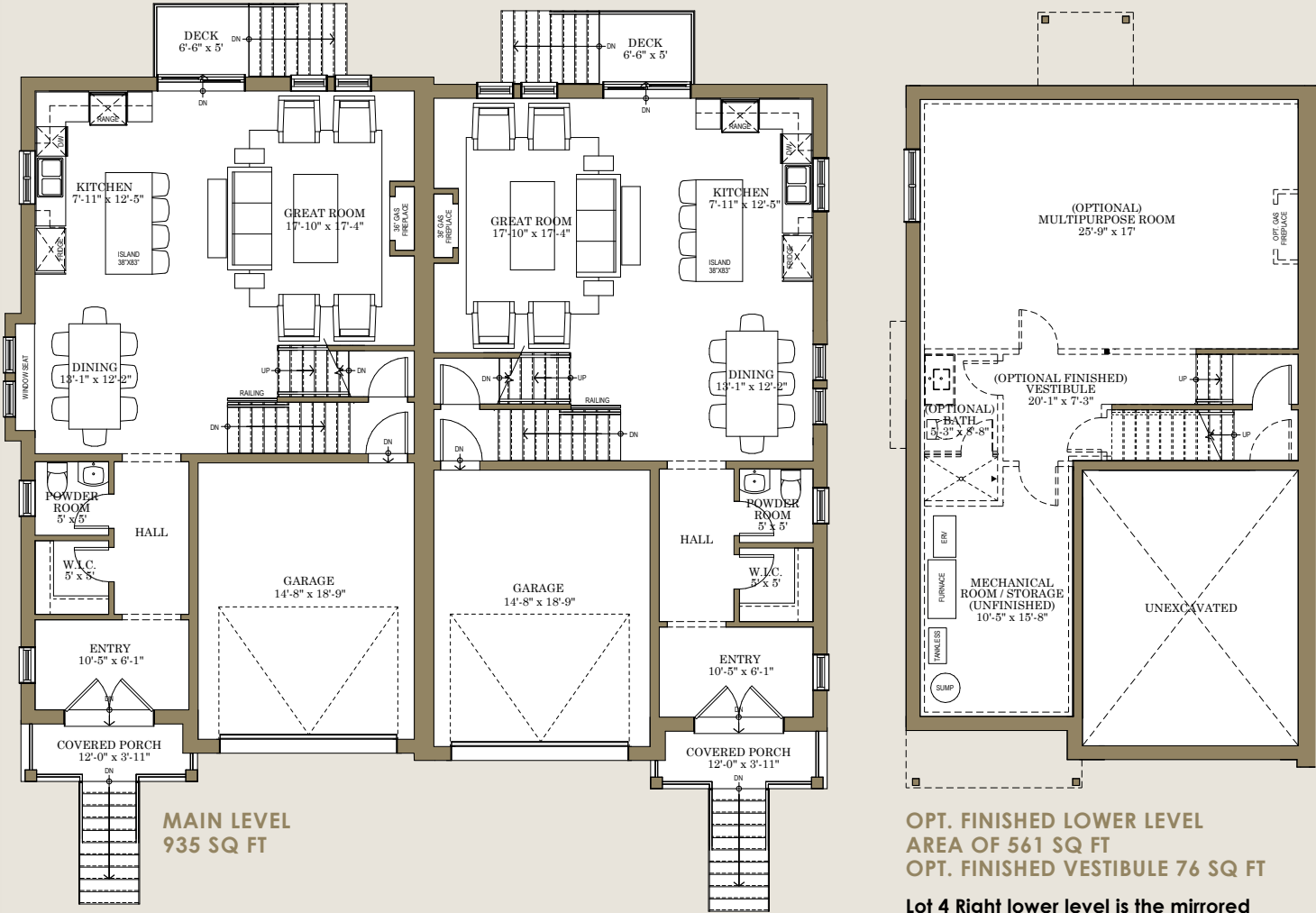
OPTIONAL  
FINISHED LOWER LEVEL  
AREA OF 582 SQ FT  
OPTIONAL  
FINISHED VESTIBULE  
31 SQ FT

Actual usable floor space may vary from stated floor area.  
Floor plan & specifications subject to change without notice. E.&O.E.

THE CARMICHAEL | LOT 4  
LEFT 2188<sup>SQ.</sup><sub>FT.</sub>, RIGHT 2179<sup>SQ.</sup><sub>FT.</sub>

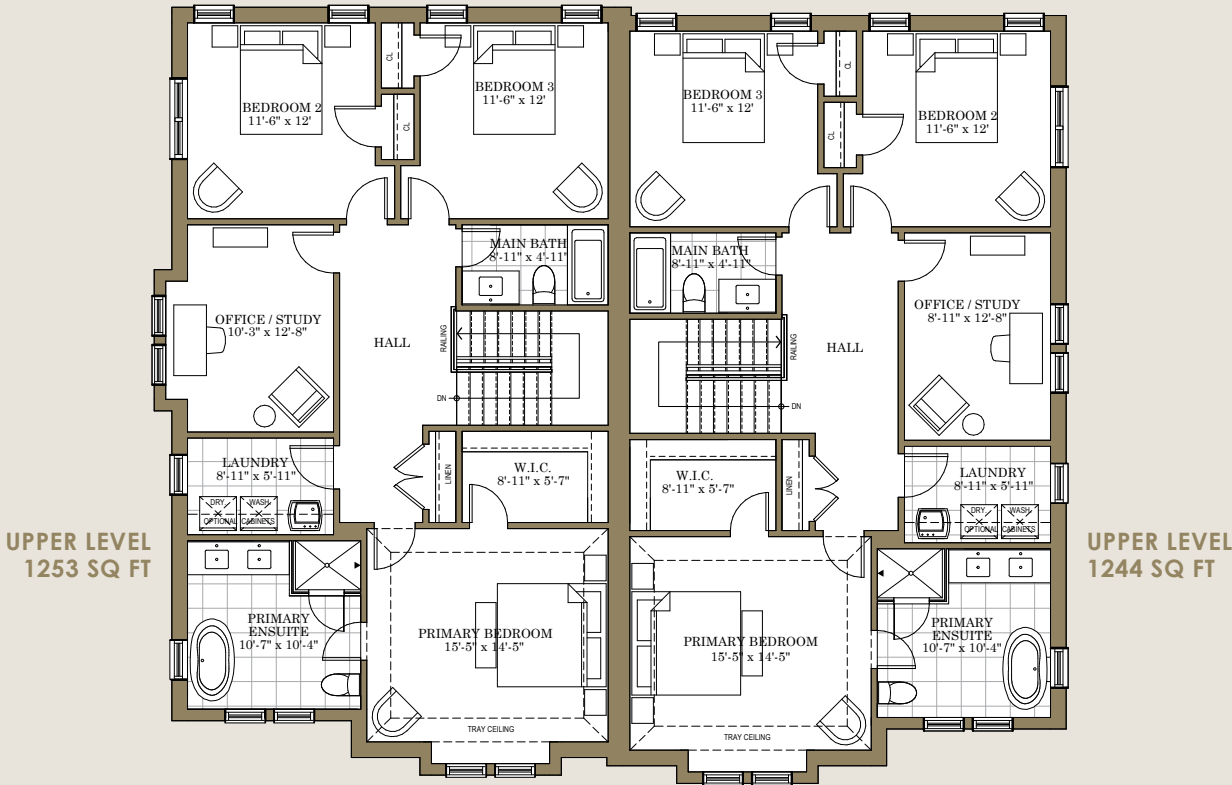
A grand entryway with French doors, classical columns, stylish pediment, and heritage inspired lanterns welcomes you home with distinction. The stunning exterior features enhanced detail to welcome you into the courtyard, and an oversized garage leads directly inside.

A generous open concept main floor leads upstairs to three spacious bedrooms. The primary suite includes a walk-in closet and a luxurious ensuite with a deep soaker tub and a frameless glass shower. For convenience, an upstairs laundry and a sizable study make every day a little easier.



OPT. FINISHED LOWER LEVEL  
AREA OF 561 SQ FT  
OPT. FINISHED VESTIBULE 76 SQ FT

Lot 4 Right lower level is the mirrored  
version of the floorplan above.



UPPER LEVEL  
1244 SQ FT

Actual usable floor space may vary from stated floor area.  
Floor plan & specifications subject to change without notice. E.&O.E.

THE CARMICHAEL | LOT 5  
LEFT 2171<sup>SQ.</sup><sub>FT.</sub>, RIGHT 2143<sup>SQ.</sup><sub>FT.</sub>

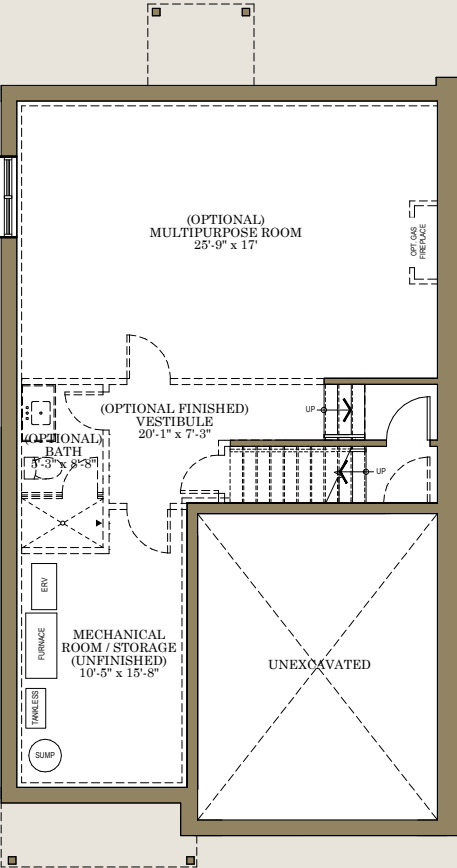
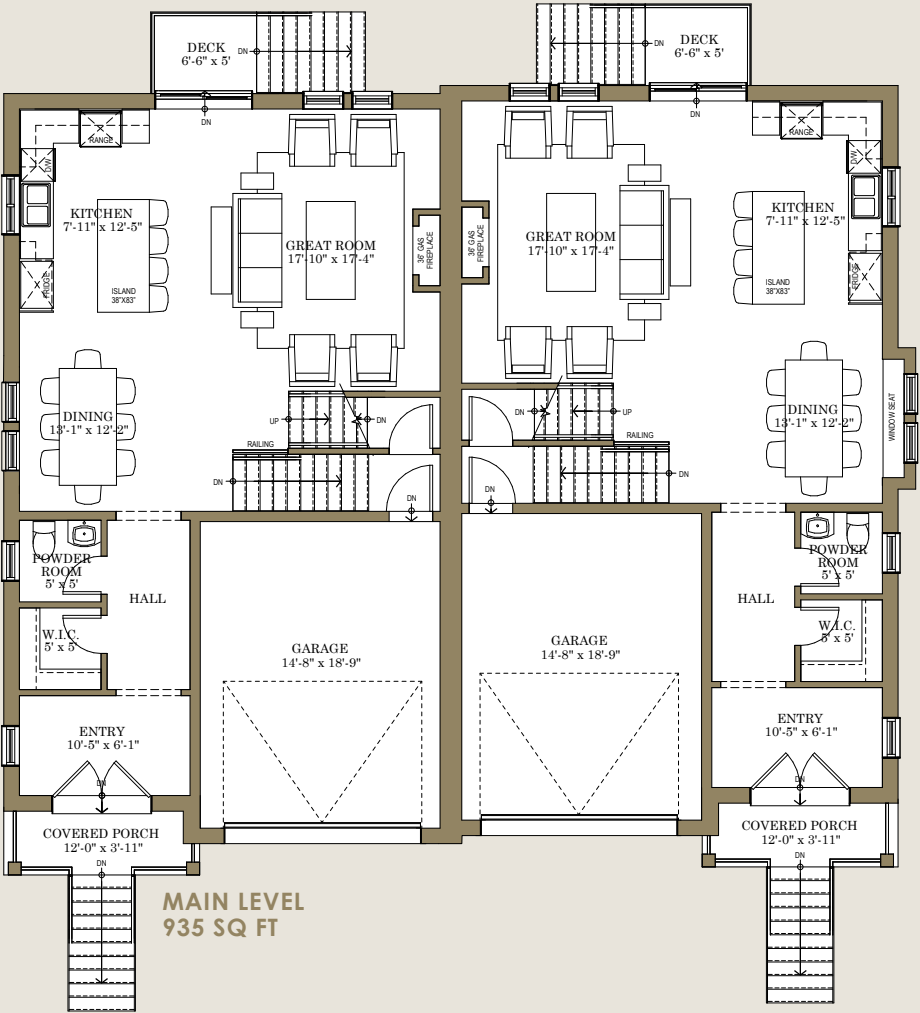
An asymmetrical exterior presents a distinctive design, with grand entryways including classic French doors and columns. Step into a welcoming front foyer, leading into a beautiful open concept main floor with a bright and beautiful kitchen, living, and dining room.

Upstairs you will discover three generous bedrooms, convenient upstairs laundry, and a spacious study to maximize productivity at home. The primary suite is a luxurious retreat, with a walk-in closet and spa-inspired ensuite with a deep soaker tub.



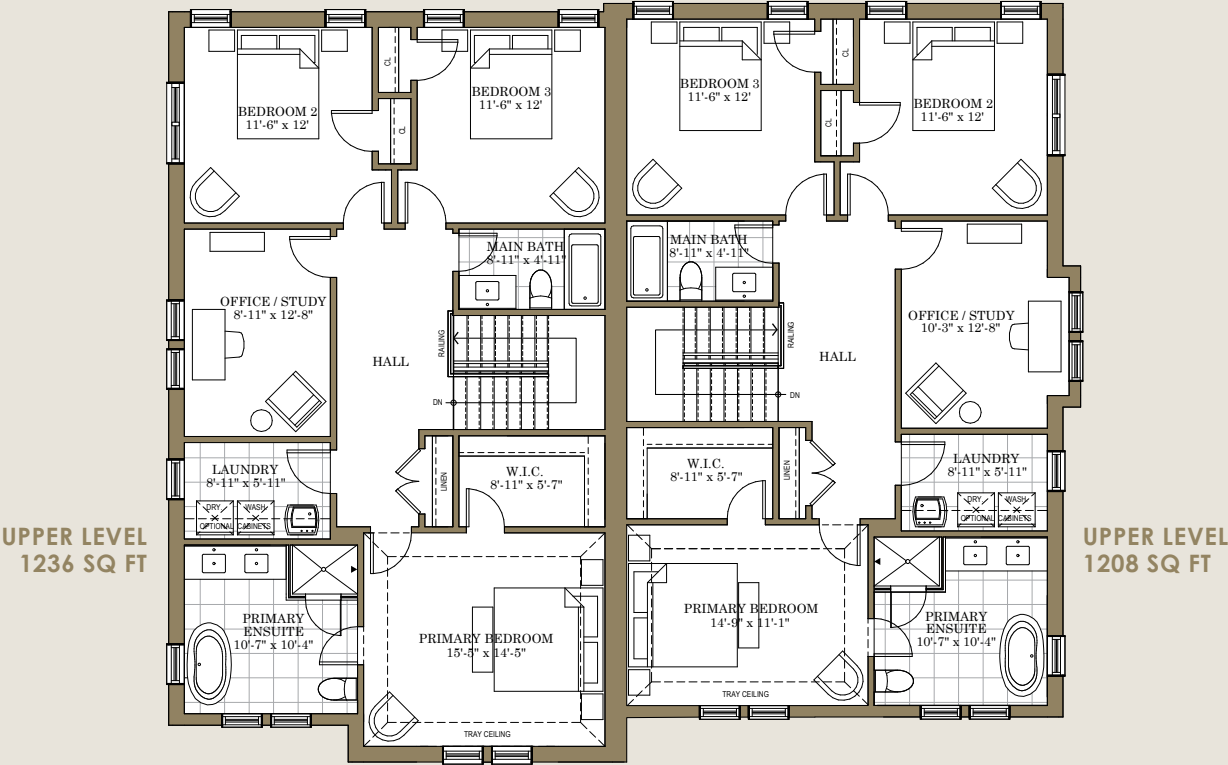
LOT 5 LEFT  
SEMI DETACHED

LOT 5 RIGHT  
SEMI DETACHED



OPT. FINISHED LOWER LEVEL  
AREA OF 561 SQ FT  
OPT. FINISHED VESTIBULE 76 SQ FT

Lot 5 Right lower level is the mirrored version of the floorplan above.



Actual usable floor space may vary from stated floor area.  
Floor plan & specifications subject to change without notice. E.&O.E.



THE **MAPLE** | LOT 6  
LEFT & RIGHT 2166 <sup>SQ.</sup>  
FT.

The exterior of The Maple features a boldly dramatic combination of heritage-inspired red brick with sharp black accents to create a stunning streetscape. This stylish semi-detached home is the perfect balance of contemporary flair and historical charm.

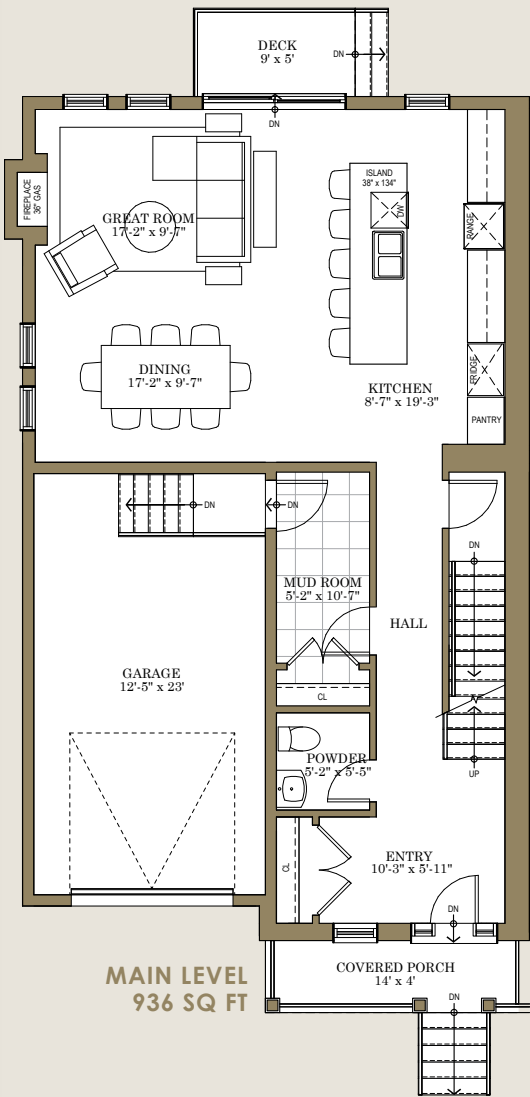
An open concept main floor features a stylish kitchen with a generous 11’ island and built-in pantry. Upstairs you will discover three oversized bedrooms and a study with 9’ ceilings throughout. The stylish primary suite offers dual walk-in closets and a luxurious four-piece ensuite, elevating every moment.

LOT 6 LEFT  
SEMI DETACHED

LOT 6 RIGHT  
SEMI DETACHED



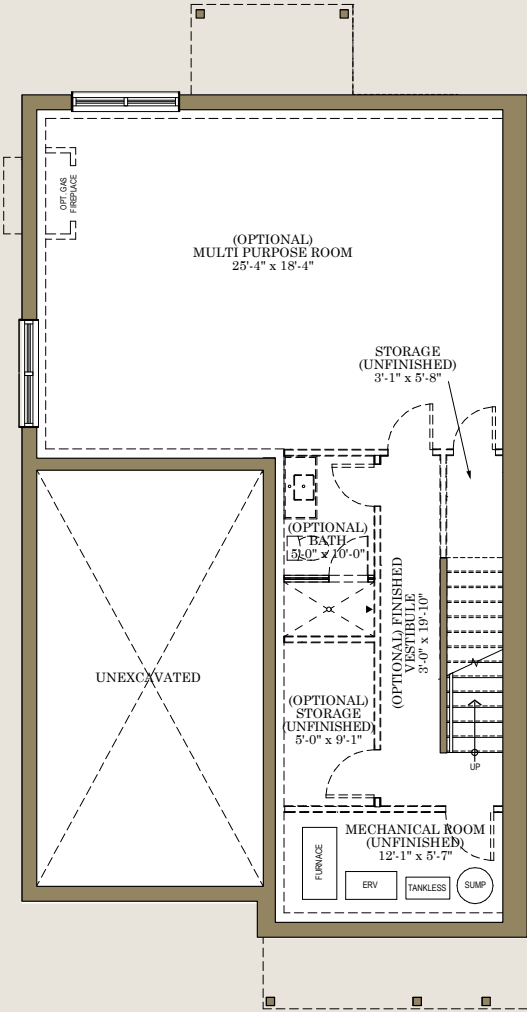
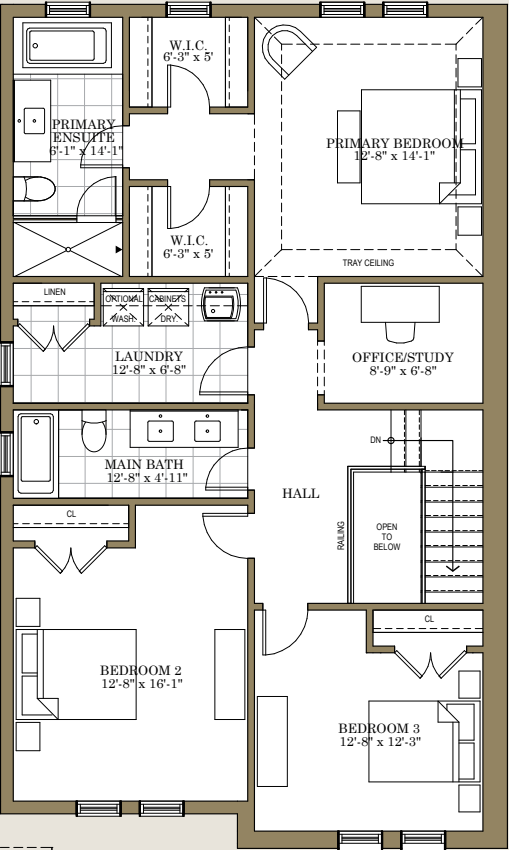
LOT 6L



MAIN LEVEL  
936 SQ FT

Lot 6 Right is the mirrored version of these floorplans.

UPPER LEVEL  
1230 SQ FT



OPTIONAL  
FINISHED LOWER LEVEL  
AREA OF 615 SQ FT  
OPTIONAL  
FINISHED VESTIBULE  
90 SQ FT

Actual usable floor space may vary from stated floor area.  
Floor plan & specifications subject to change without notice. E.&O.E.

THE **MADELINE** | LOT 7  
1956<sup>SQ.</sup>  
FT.

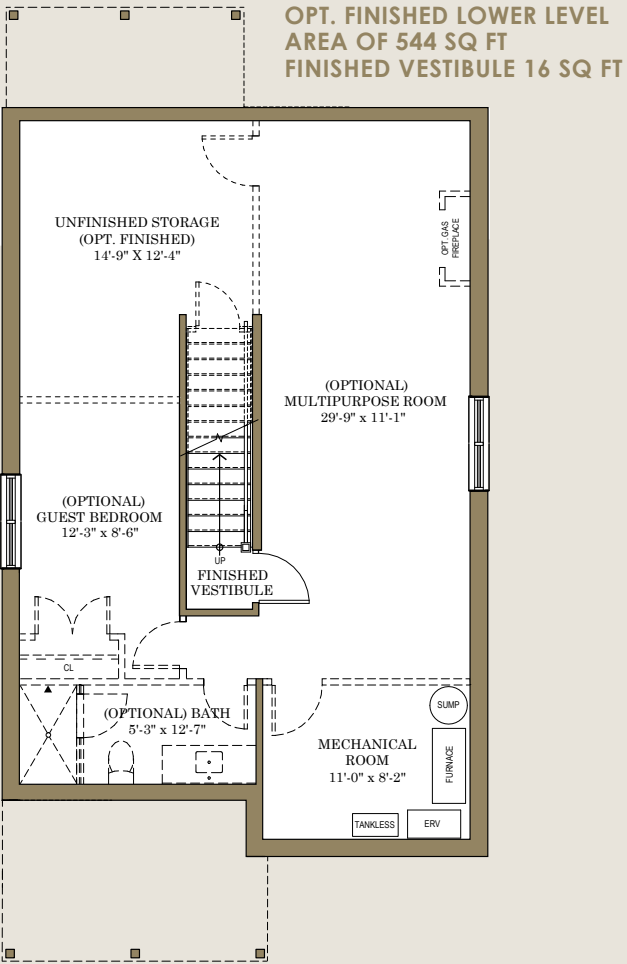
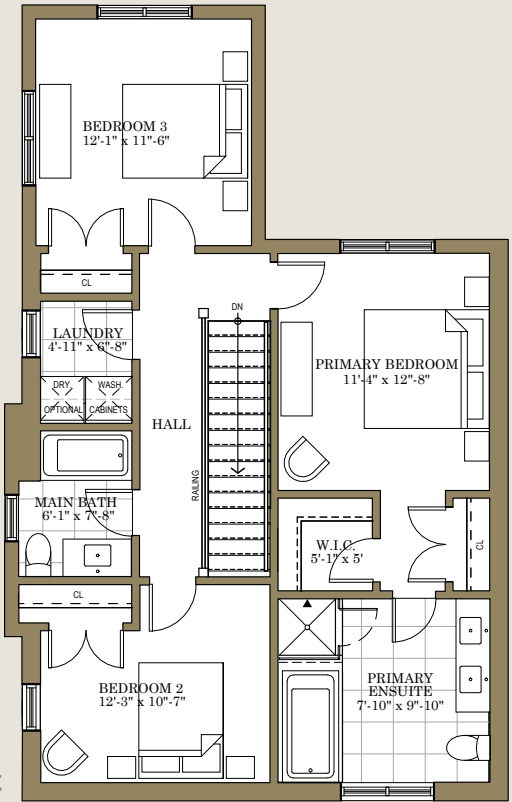
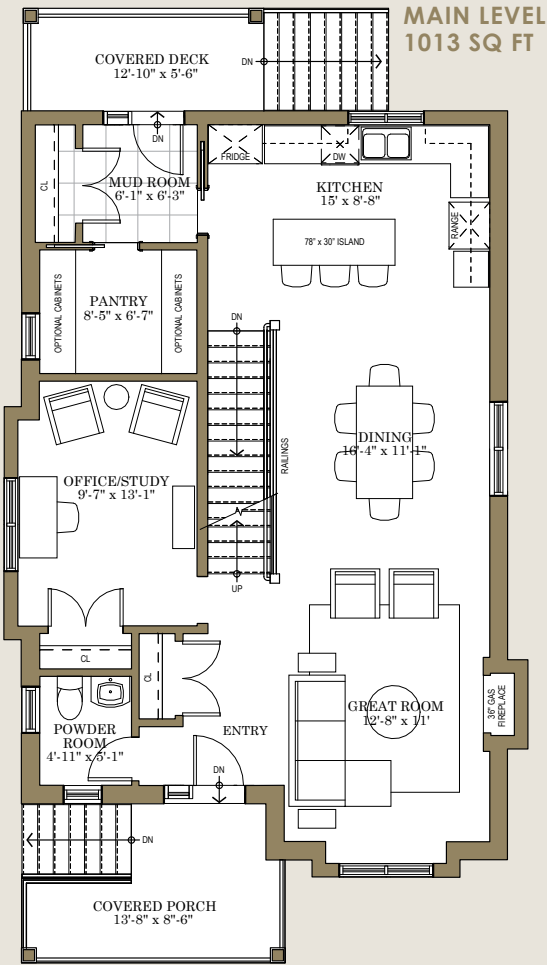
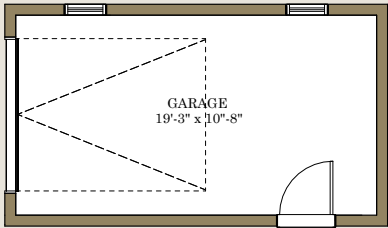
A stylish exterior facade combines classic and contemporary, with heritage-inspired brick, and a charming circular window. Both front and back entry include a covered porch, maximizing exterior living space.

An open concept kitchen leads to a mudroom and butler's pantry for the most convenient storage and function. A comfortable study is perfect to unwind in peace or work from home. And upstairs, a generous primary suite creates a peaceful retreat, with two additional bedrooms to match your family's needs.

LOT 7 DETACHED  
Front Elevation  
facing Maple Street



Side View Elevation  
facing Sixth Street



Actual usable floor space may vary from stated floor area.  
Floor plan & specifications subject to change without notice. E.&O.E.



THE **MAPLE** | LOT 8  
LEFT & RIGHT 2166 <sup>SQ.</sup>  
FT.

High-quality James Hardie siding, and heritage-inspired brick combine to create a contemporary exterior with historic appeal. An attached garage leads directly into a convenient mud room to keep your home tidy, with a powder room just off the foyer.

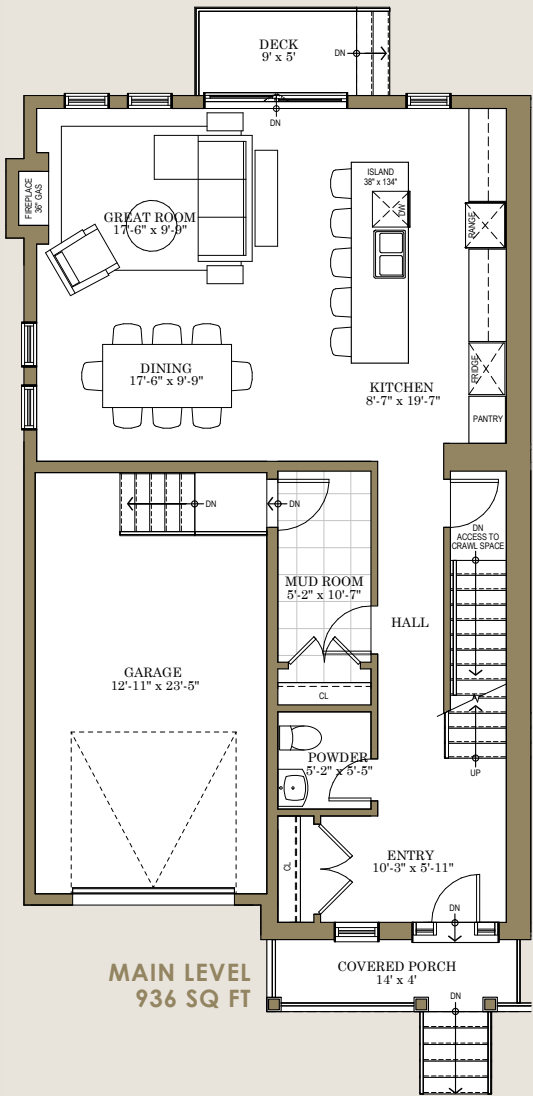
Your stylish kitchen includes an integrated pantry and remarkable oversized island, which opens into a bright open concept living and dining room - perfect for entertaining. Upstairs you will find three spacious bedrooms, including a primary suite with double closets and a luxurious four-piece bathroom.

LOT 8 LEFT  
SEMI DETACHED

LOT 8 RIGHT  
SEMI DETACHED



LOT 8 LEFT

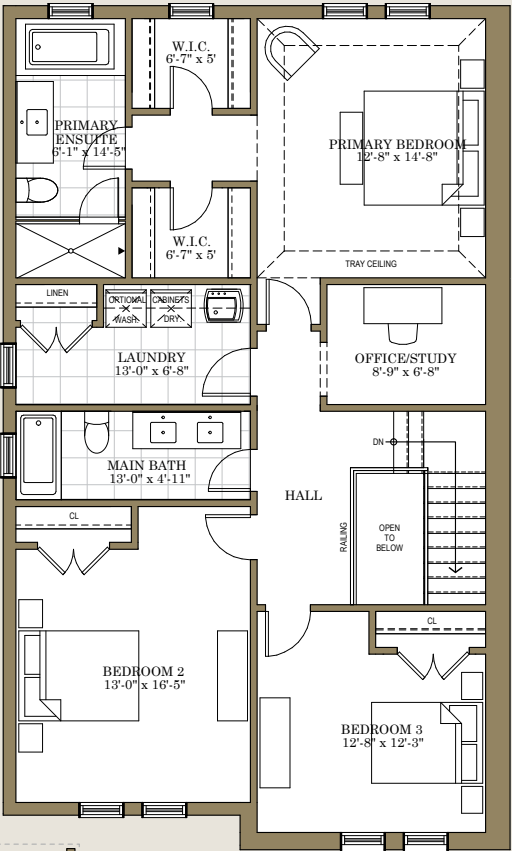


MAIN LEVEL  
936 SQ FT

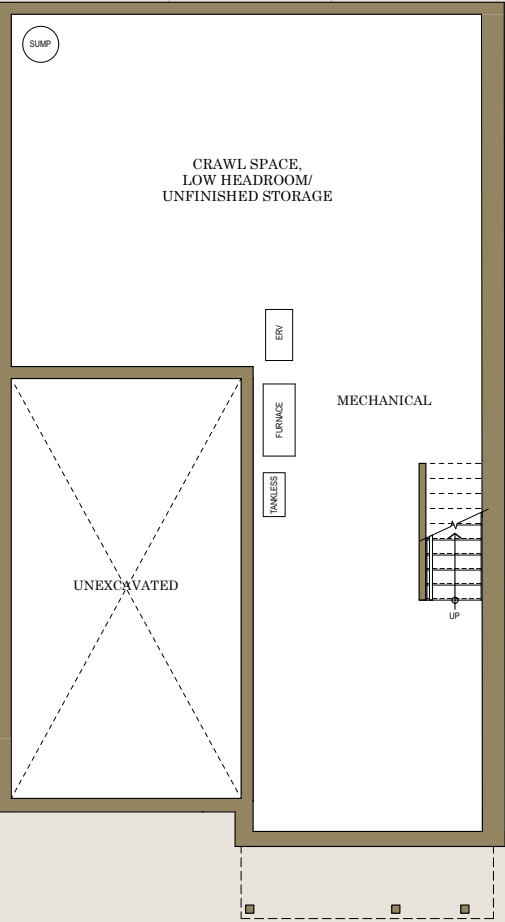
Lot 8 Right is the mirrored version of these floorplans.

Actual usable floor space may vary from stated floor area. Floor plan & specifications subject to change without notice. E.&O.E.

UPPER LEVEL  
1230 SQ FT



LOWER LEVEL  
936 SQ FT



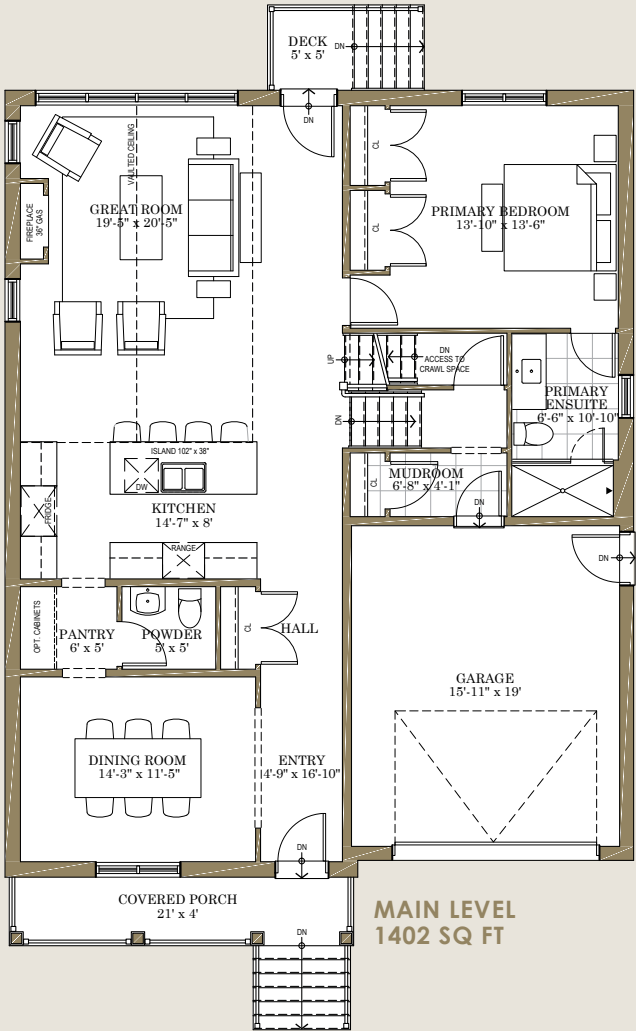
THE BROOKE | LOT 9  
2599<sup>SQ.</sup>  
FT.

Dramatic black James Hardie siding and contemporary wood accents make The Brooke stand out as a distinctively stylish home. Soaring vaulted ceilings in the great room create an awe-inspiring architectural effect. A formal dining room cultivates a sense of sophistication, and the main floor primary bedroom features an ensuite with transitional fixtures and a frameless glass shower.

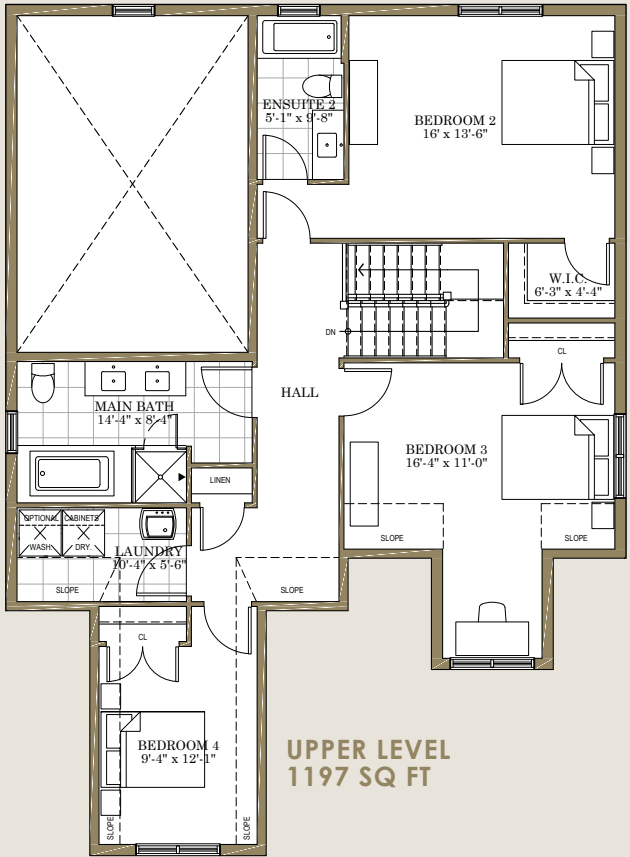
Upstairs, three second-floor bedrooms and a beautiful four-piece bathroom all feature soaring 9’ ceilings, with an upper-level laundry room for convenience.



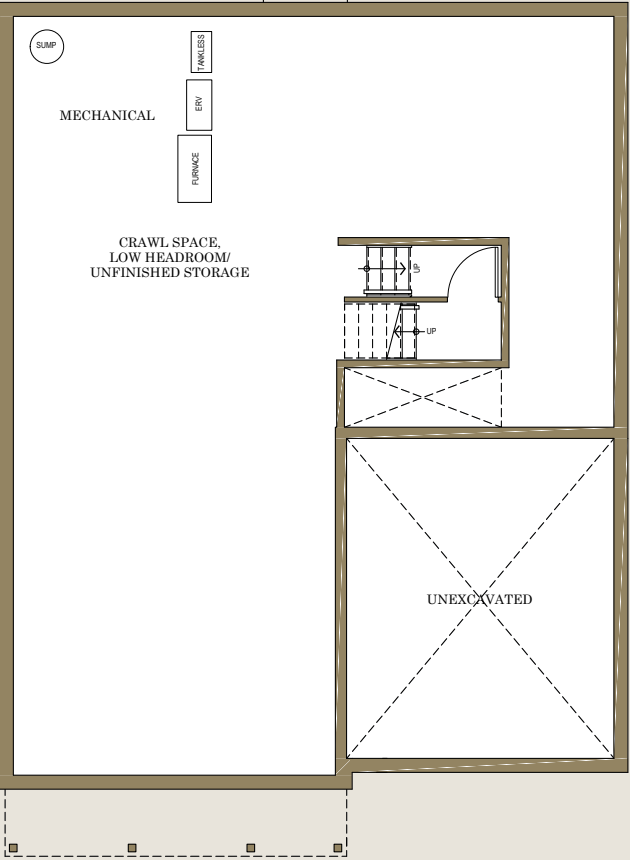
LOT 9  
DETACHED



MAIN LEVEL  
1402 SQ FT



UPPER LEVEL  
1197 SQ FT



LOWER LEVEL  
1402 SQ FT

Actual usable floor space may vary from stated floor area.  
Floor plan & specifications subject to change without notice. E.&O.E.