



VICTORIA
ANNEX



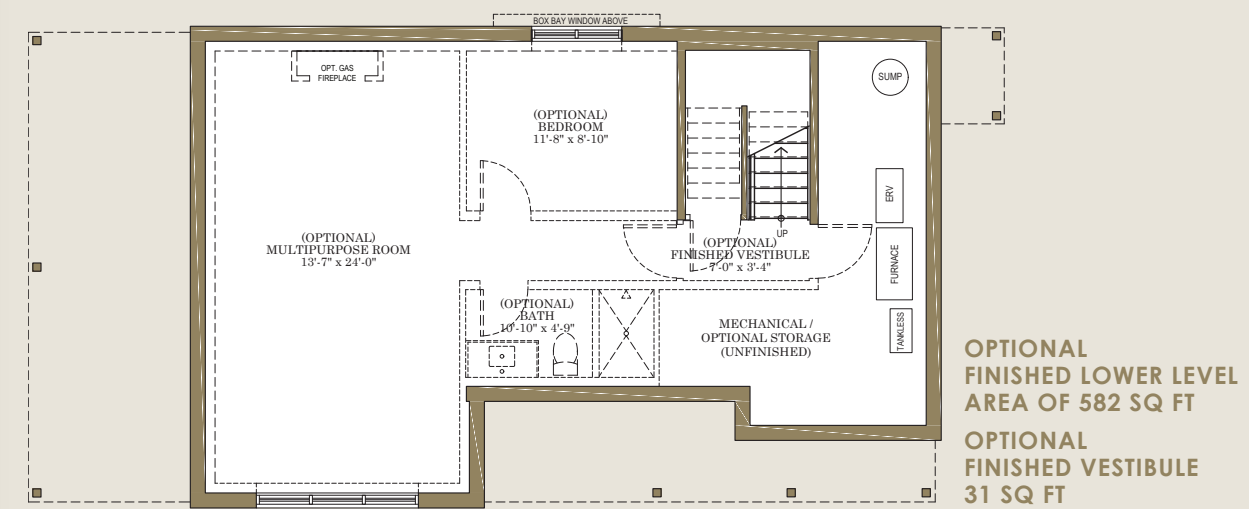
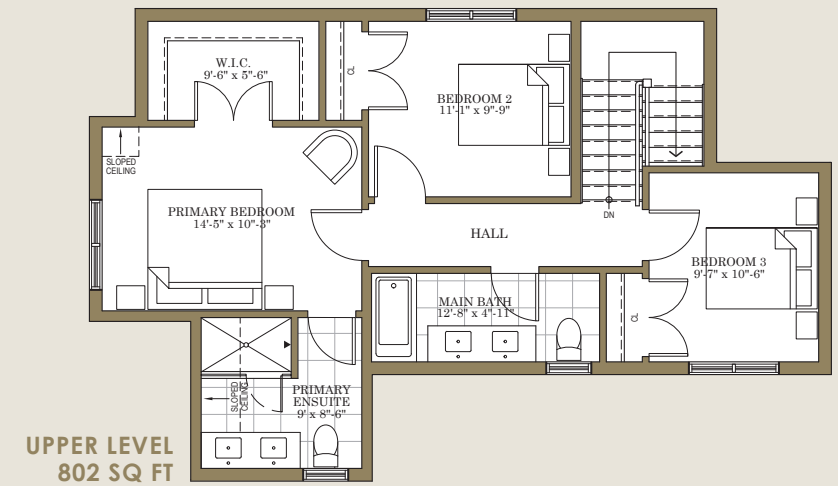
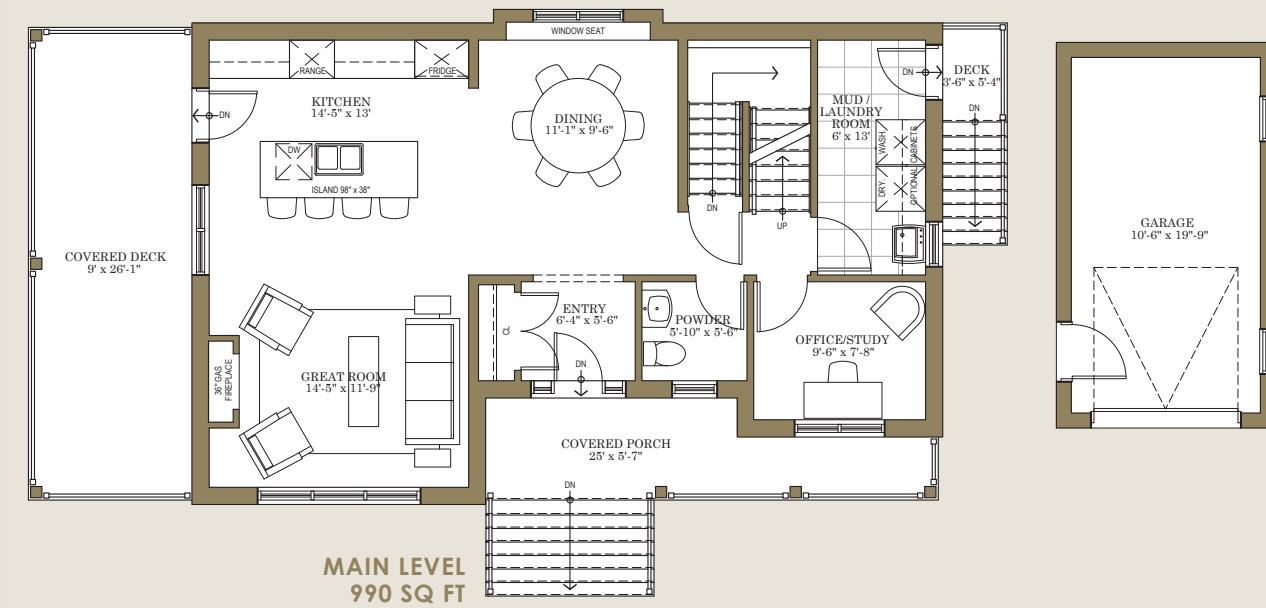
SEMI & SINGLE DETACHED HOMES | FLOORPLANS

THE NEWPORT | LOT 3

1792 SQ. FT.

This is the centre of it all. The corner of Fifth and Maple, Collingwood's most desirable streets, is home to The Newport. An oversized covered porch lines the entire side of the home, offering classic appeal and plenty of outdoor space.

Your open concept main floor features a luxurious kitchen that leads out onto the porch for convenient outdoor dining, and a main floor study provides the perfect place to work in peace. Upstairs, three spacious bedrooms includes a sophisticated primary bedroom with a walk-in closet and gleaming ensuite bathroom.



Actual usable floor space may vary from stated floor area. Floor plan & specifications subject to change without notice. E.&O.E.

THE MADELINE | LOT 7

1956^{SQ.}
FT.

A stylish exterior facade combines classic and contemporary, with heritage-inspired brick, and a charming circular window. Both front and back entry include a covered porch, maximizing exterior living space.

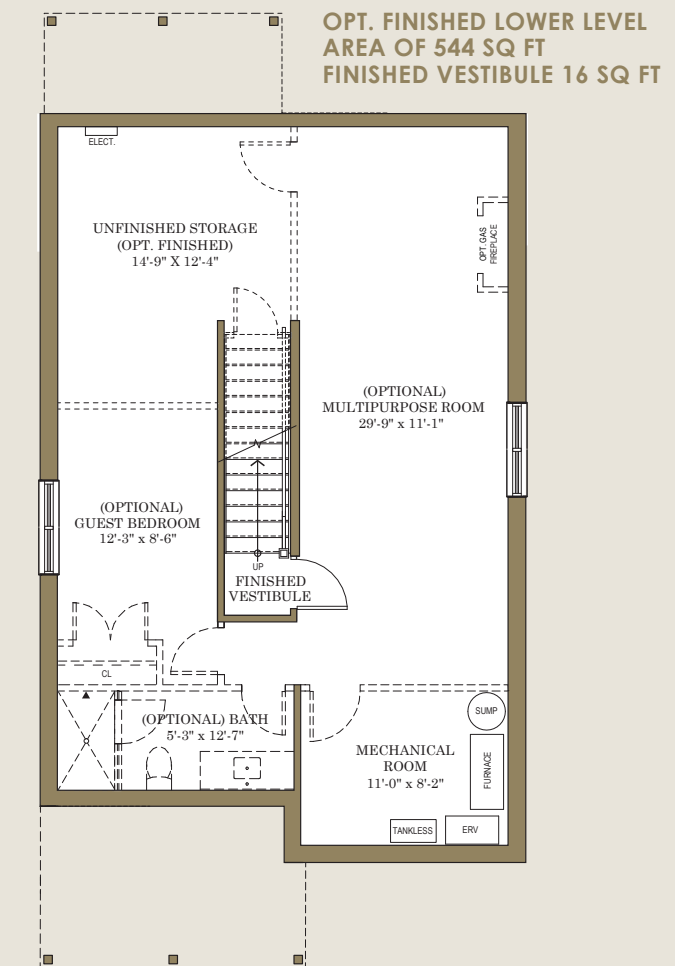
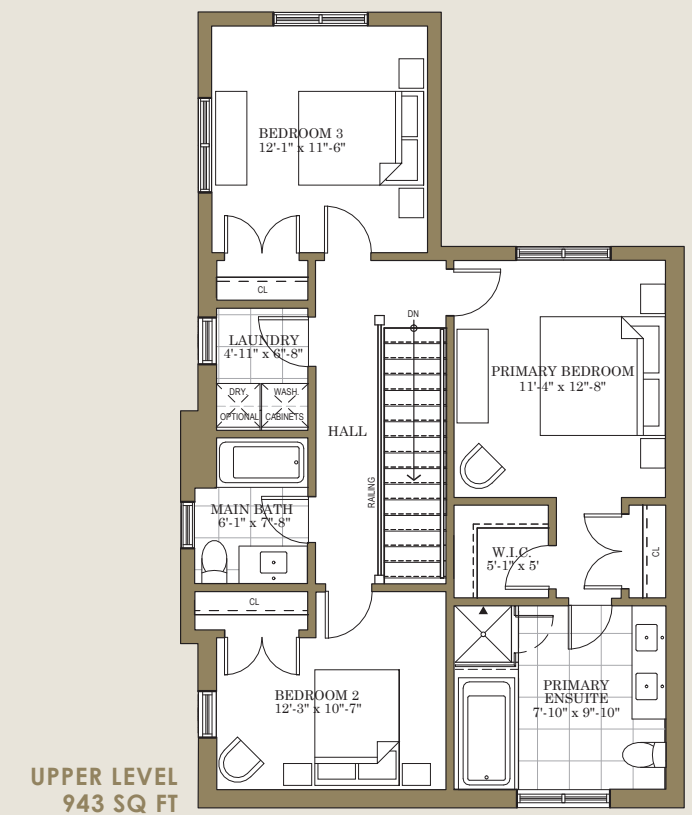
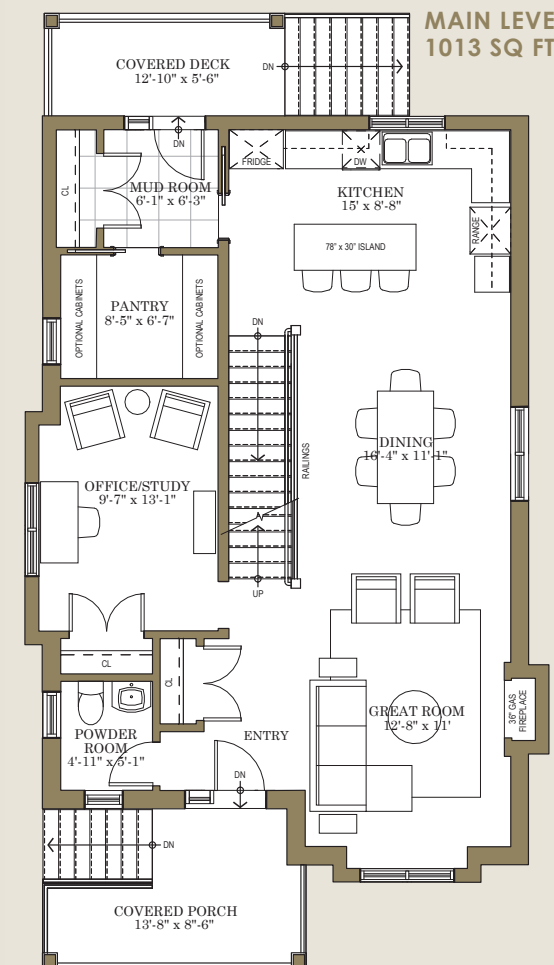
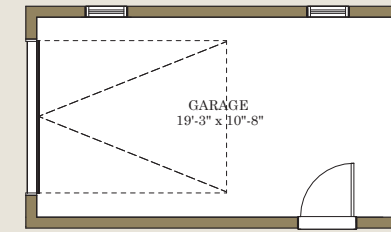
An open concept kitchen leads to a mudroom and butler's pantry for the most convenient storage and function. A comfortable study is perfect to unwind in peace or work from home. And upstairs, a generous primary suite creates a peaceful retreat, with two additional bedrooms to match your family's needs.



LOT 7 DETACHED
Front Elevation
facing Maple Street



Side View Elevation
facing Sixth Street



Actual usable floor space may vary from stated floor area.
Floor plan & specifications subject to change without notice. E.&O.E.

THE MAPLE | LOT 8
LEFT & RIGHT 2166 SQ. FT.

High-quality James Hardie siding, and heritage-inspired brick combine to create a contemporary exterior with historic appeal. An attached garage leads directly into a convenient mud room to keep your home tidy, with a powder room just off the foyer.

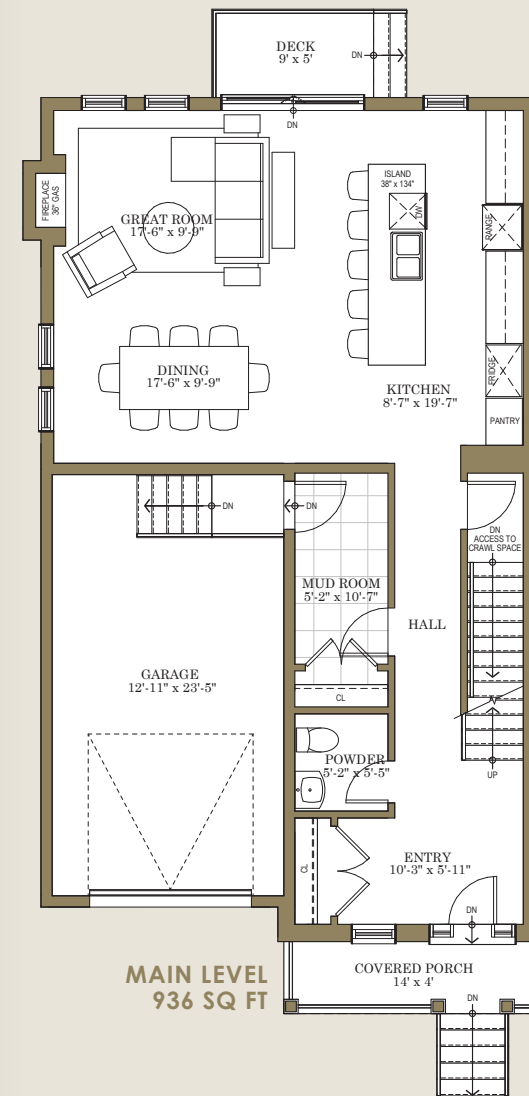
Your stylish kitchen includes an integrated pantry and remarkable oversized island, which opens into a bright open concept living and dining room - perfect for entertaining. Upstairs you will find three spacious bedrooms, including a primary suite with double closets and a luxurious four-piece bathroom.



LOT 8 LEFT
SEMI DETACHED

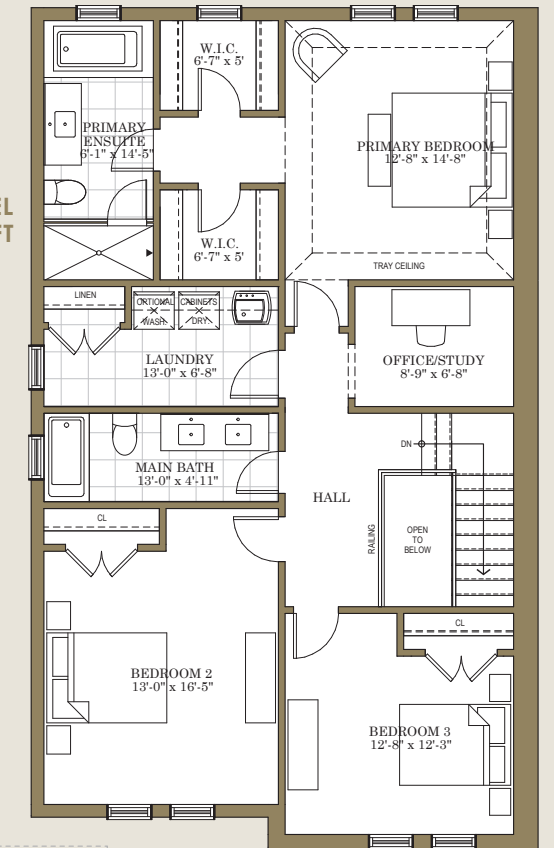
LOT 8 RIGHT
SEMI DETACHED

LOT 8 LEFT

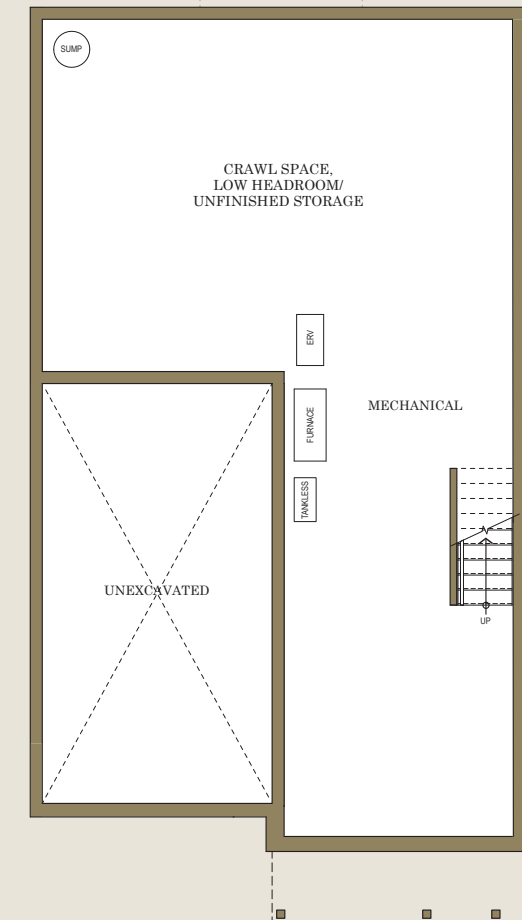


MAIN LEVEL
936 SQ FT

UPPER LEVEL
1230 SQ FT



LOWER LEVEL
936 SQ FT



Lot 8 Right is the mirrored version of these floorplans.

Actual usable floor space may vary from stated floor area. Floor plan & specifications subject to change without notice. E.&O.E.